

# Product Information Bulletin



Product Type: Coated Spherodized Purified Graphite (Natural Graphite Anode)

## General Characteristics

Product Name	GEO-95 CG13
Type	Surface Coated Spherical Graphite
Appearance	Fine Dark Grey Powder

## Measured Characteristics

Loss on Ignition, wt%C	99.95
Ash, %	0.05
Scott Volume, g/cm <sup>3</sup>	0.62
Tap Density, g/cm <sup>3</sup>	1.0
BET Surface Area, m <sup>2</sup> /g	4.1

## Elemental Analysis, ppm

Element	PPM	Element	PPM
Iron, Fe	18.6	Cobalt, Co	11.8
Chromium, Cr	7.9	Copper, Cu	4.1
Nickel, Ni	5.5	Aluminum, Al	23.2
Zinc, Zn	10.0	Sulfur, S	72.1

### Contact information:

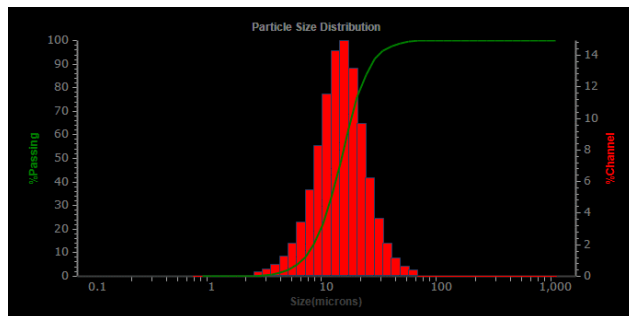
#### Volt Resources Limited

Level 25, 108 St Georges Terrace PERTH Western Australia 6000 Australia

www.voltresources.com

PIB-001, Rev 001 1/2023

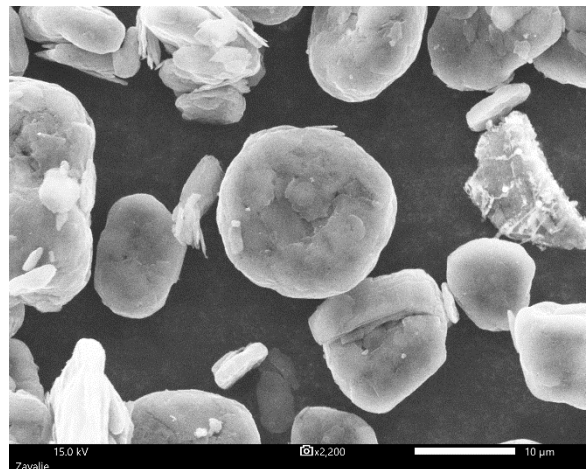
## Particle Size Distribution



Laser diffraction particle size analysis by Microtrac S3500

10% Less Than (µm)	6.9
50% Less Than (µm)	13.4
90% Less Than (µm)	24.5
Mean Value (µm)	15.0

## Product Appearance



Note: These are not product specifications. Information provided in this Certificate of Analysis is supplied to indicate the approximate physical and chemical properties of the material. Customers are strongly urged to test the material independently prior to application/purchase.