

Product Information Bulletin



Product Type: Natural Graphite for Conductivity Enhancement Purposes

General Characteristics

| | |
|--------------|-----------------------|
| Product Name | GA-1 MF |
| Type | Milled Fines |
| Appearance | Fine Dark Grey Powder |

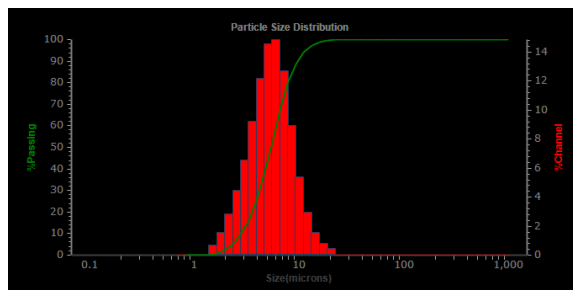
Measured Characteristics

| | |
|-------------------------------------|-------|
| Loss on Ignition, wt%C | 99.95 |
| Ash, % | 0.05 |
| Scott Volume, g/cm ³ | 0.051 |
| Tap Density, g/cm ³ | 0.42 |
| BET Surface Area, m ² /g | 14.4 |

Elemental Analysis, ppm

| Element | PPM | Element | PPM |
|--------------|-----|--------------|-----|
| Iron, Fe | 8.9 | Cobalt, Co | 7.8 |
| Chromium, Cr | 8.1 | Copper, Cu | 3.0 |
| Nickel, Ni | 5.8 | Aluminum, Al | 8.7 |
| Zinc, Zn | 9.2 | Sulfur, S | 4.3 |

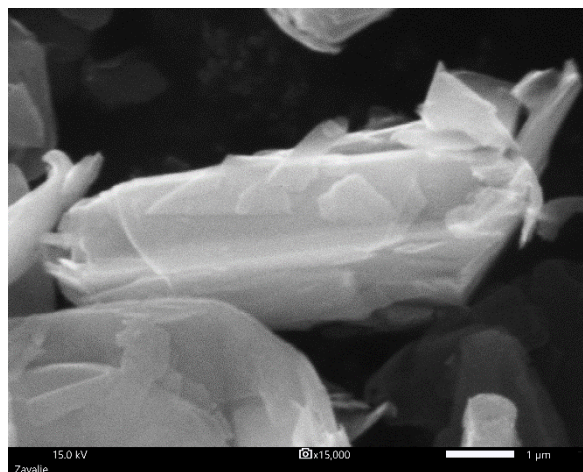
Particle Size Distribution



Laser diffraction particle size analysis by Microtrac S3500

| | |
|--------------------|-----|
| 10% Less Than (µm) | 2.8 |
| 50% Less Than (µm) | 5.4 |
| 90% Less Than (µm) | 9.6 |
| Mean Value (µm) | 5.9 |

Product Appearance



Contact information:

Volt Resources Limited

Level 25, 108 St Georges Terrace PERTH Western Australia 6000 Australia

www.voltresources.com

PIB-001, Rev 001 1/2023

Note: These are not product specifications. Information provided in this Certificate of Analysis is supplied to indicate the approximate physical and chemical properties of the material. Customers are strongly urged to test the material independently prior to application/purchase.